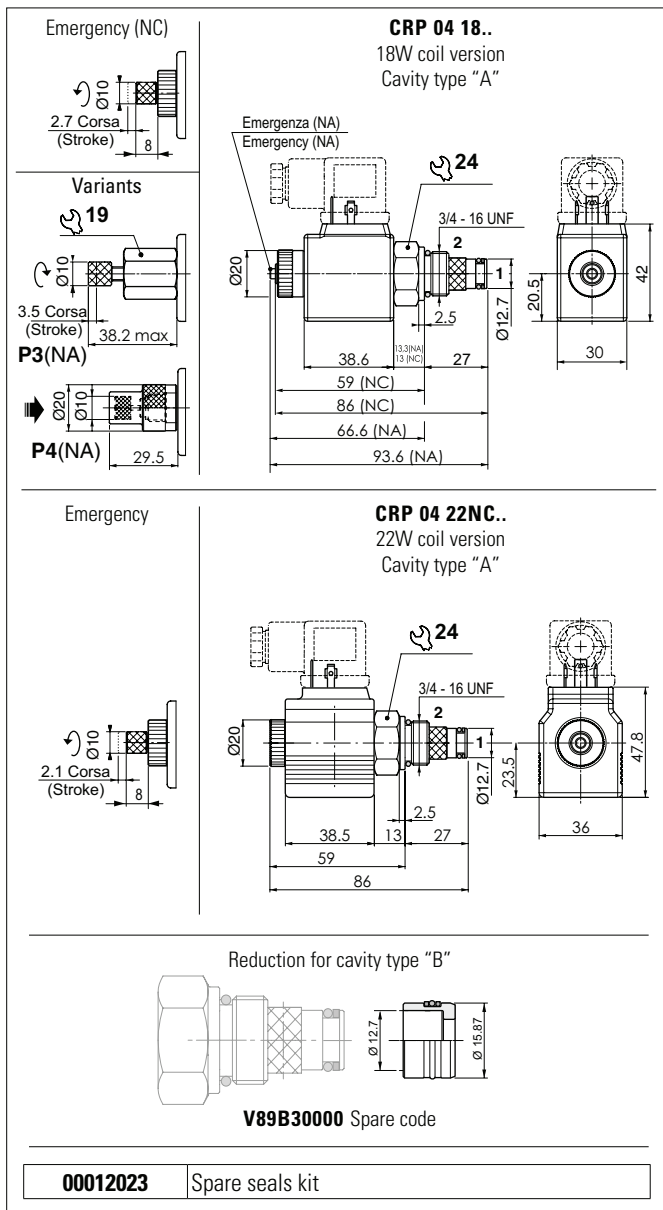


PILOTED OPERATED SOLENOID VALVE



Connector to be ordered separately, see sect. 18

The pilot-operated electric 2-way 2-position directional valve is controlled electrically.

The tapered poppet is in tempered and ground steel.

Available in normally open (NA) or normally closed (NC) versions.

- NA, free passage from 2 to 1 with de-energised coil.
- NC, free passage from 2 to 1 with energised coil or from 1 to 2 with de-energised coil.

Normally closed valves can work with DC or AC coils.

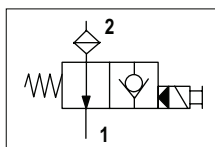
Normally open valves work with DC coils whereas RAC coils with a connector and incorporated rectifier must be used for AC applications.

The NC valve sleeve is in galvanised steel and the NA valve sleeve with nikel coated.

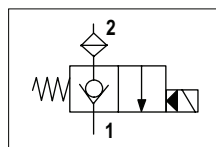
FEATURES

Max. pressure	300 bar (NA) 280 bar (NC)
Max. Flow	20 l/min (CRP418NC) 40 l/min (CRP422NC-CRP418NA)
Max. Leakage (0 ÷ 10 drops/min)	0 ÷ 0.5 cm ³ /min
Max. excitation frequency	2 Hz
Duty cycle	100% ED
Hydraulic fluids	DIN 51524 Mineral oils
Fluid viscosity	10 ÷ 500 mm ² /s
Fluid temperature	-25°C ÷ 75°C
Ambient temperature	-25°C ÷ 60°C
Max. contamin. level class with filter	ISO 4406:1999 - class 21/19/16
Cartridge filter	280µm
Type of protection (in relation to the connection used)	IP65
Weight (with coil)	0.27 kg (..18) - 0.35 kg (..22)
Cartridge tightening torque	25 ÷ 30 Nm
Coil ring nut tightening torque	7 Nm
Emergency tightening torque	
Cavity standard "A" (3/4 - 16 UNF)	CD018006 - CD018009 (See section 15)
Cavity with reduction "B" (3/4 - 16 UNF)	CD018012 (See section 15)

HYDRAULIC SYMBOLS



Normally open

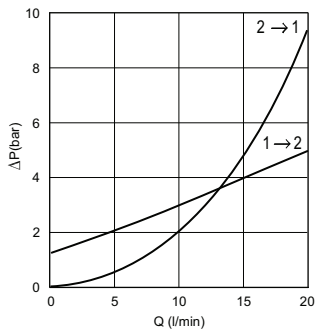


Normally closed

PRESSURE DROPS

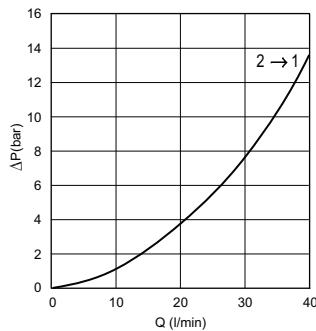
LIMITS OF USE

CRP 04 18NC.

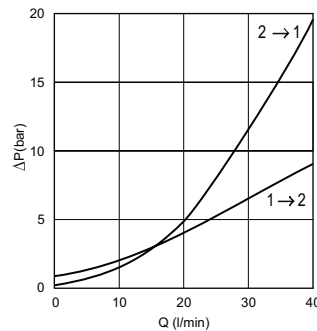


1 → 2 Only with coil not energized

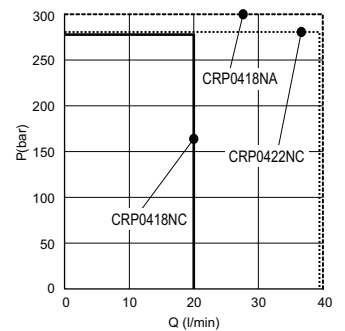
CRP 04 18NA.



CRP 04 22NC.

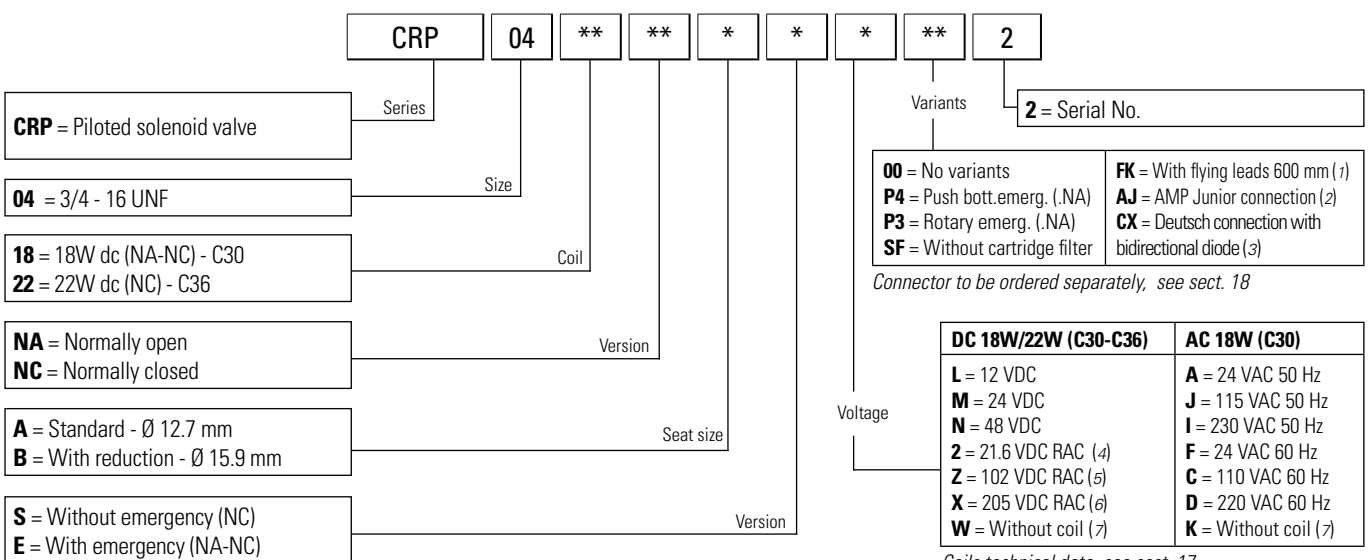


1 → 2 Only with coil not energized



The tests were carried out with the solenoids at operating temperature, with a supply voltage 10% below nominal value and with a 40°C fluid temperature. The fluid used is a mineral oil with viscosity of 46 mm²/s at 40°C.

ORDERING CODE



(1) Only voltages 12 VDC - 24 VDC
 (2) Only voltages 12 VDC - 24 VDC and coil 22W
 (3) Only voltages 12 VDC - 24 VDC and coil 18W
 (4) With rectifier: 24 VAC/50-60Hz

(5) With rectifier: 115 VAC/50Hz - 120VAC/60Hz
 (6) With rectifier: 230 VAC/50Hz - 240VAC/60Hz
 (7) Performance are guaranteed only using valves completed with BFP coil